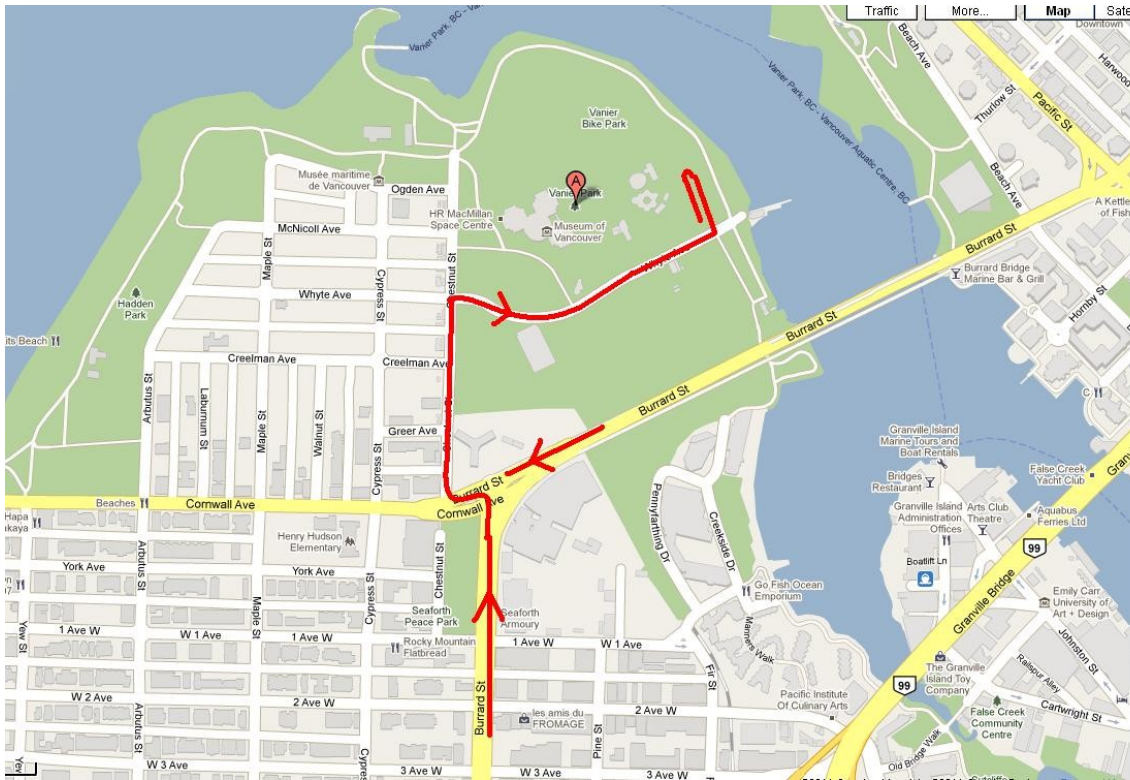
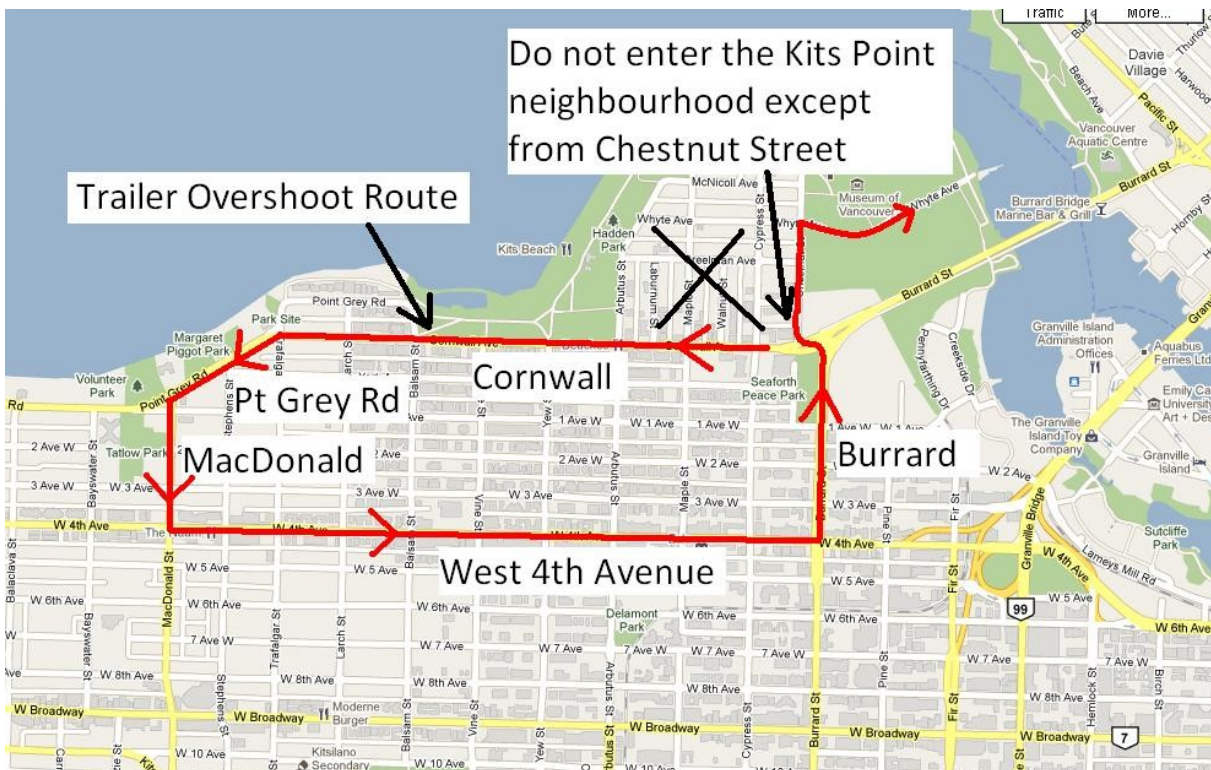


Head Up The Creek - 2011 – False Creek Rowing Club – Trailer Instructions

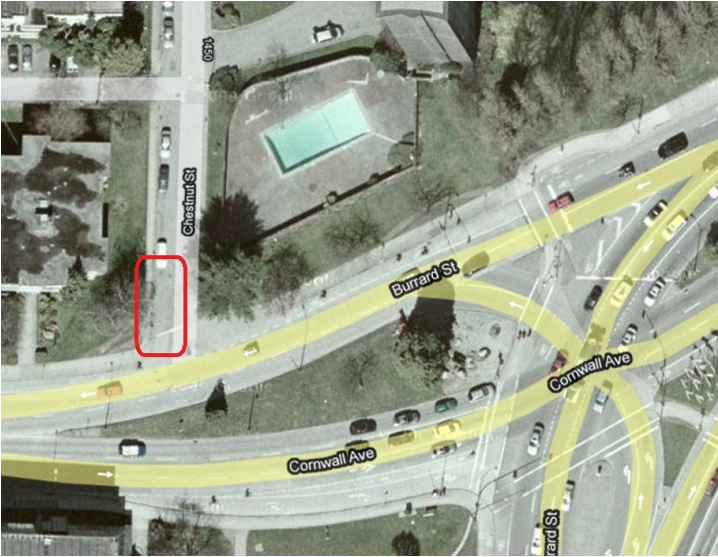
Route into Vanier Park with a rowing trailer. It will save you lots of time to not overshoot the quick turn right onto Chestnut Street.



If you miss the Chestnut Street turn, this is the suggested overshoot route: continue westbound on Cornwall. It will turn into Point Grey Road. Turn left (south) onto MacDonald, then left (east) again on West 4th avenue and left (north) onto Burrard to approach the Chestnut turn off another time.



Note the sharp turn onto Chestnut indicated by the red box. There is a bicycle lane on Burrard Street as it turns into Cornwall. You may need to straddle both lanes in order to make the turn.



Here is the plan of the site.

